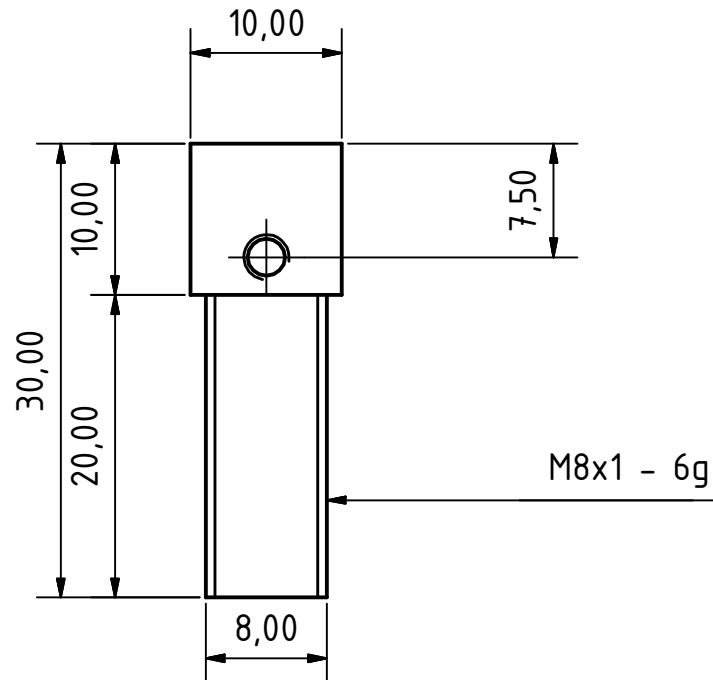
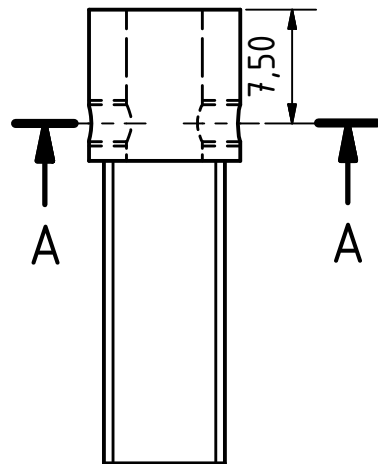
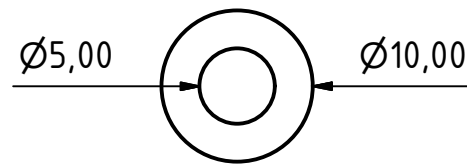
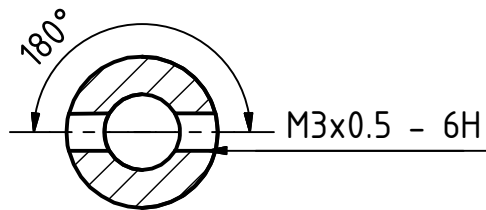


A-A (2 : 1)



| | |
|---|--------------------------|
| Projekt: | UnsatPi |
| Bauteil: | ShaftCoupling |
| Revision: | 0 |
| Erstellt am: | 25.07.2020 |
| Erstellt von: | Dennis Heinrich |
| Material: | Messing, weicher Gelbton |
| Hinweis: Nur zur Verwendung in Forschung und Lehre. | |